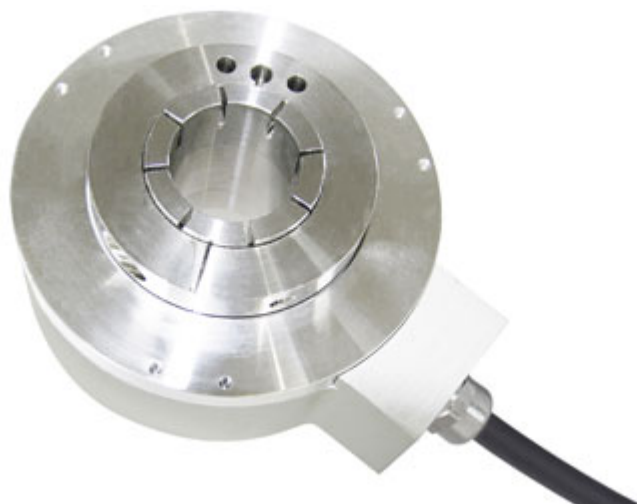




## IXARC Incremental Encoder

**OCD-INH00-XXXXX-T300-5RW**



### Interface

Interface	Incremental
-----------	-------------

### Outputs

Output Driver	Push-Pull (HTL)
Output Incremental	A, /A, B, /B, Z, /Z
Output Voltage Low Level Push-Pull (HTL)	< 2.5 V

### Electrical Data

Supply Voltage	5 - 30 VDC
Current Consumption	Typical 70 mA, Max. 150 mA
Reverse Polarity Protection	Yes
Short Circuit Protection	Yes

### Sensor

Technology	Optical
Pulses per Revolution	12, 256, 360, 512, 1000, 1024, 2048, 4096, 5000

### Environmental Specifications

Protection Class (Shaft)	IP65
Protection Class (Housing)	IP65
Operating Temperature	-40 °C (-40 °F) - +80 °C (+176 °F)

Data Sheet

Printed at 3-11-2023 10:11



Humidity	98% RH, no condensation
----------	-------------------------

### Mechanical Data

Connection Cap Material	None
Housing Material	Aluminum
Housing Coating	No Coating
Flange Type	Through Hollow Shaft , $\varnothing$ 100 mm
Flange Material	Aluminum
Shaft Type	Through
Shaft Diameter	$\varnothing$ 30 mm (1.18")
Shaft Material	Stainless Steel V2A (1.4305, 303)
Max. Shaft Load	Axial 100 N, Radial 200 N
Rotor Inertia	$\leq$ 1800 gcm <sup>2</sup> [ $\leq$ 9.8 oz-in <sup>2</sup> ]
Friction Torque	$\leq$ 4 Ncm @ 20 °C (5.7 oz-in @ 68 °F)
Max. Permissible Mechanical Speed	$\leq$ 3500 1/min
Shock Resistance	$\leq$ 100 g (half sine 6 ms, EN 60068-2-27)
Vibration Resistance	$\leq$ 10 g (10 Hz - 2000 Hz, EN 60068-2-6)
Length	52,5 mm (2.07")
Weight	1400 g (3.09 lb)
Maximum Axial / Radial Misalignment	$\pm$ 0.5 mm / $\pm$ 0.3 mm

### Electrical Connection

Connection Orientation	Radial
Connection Type	Cable / Connector

### Certification

### Product Life Cycle

Product Life Cycle	New
--------------------	-----

### Connection Plan

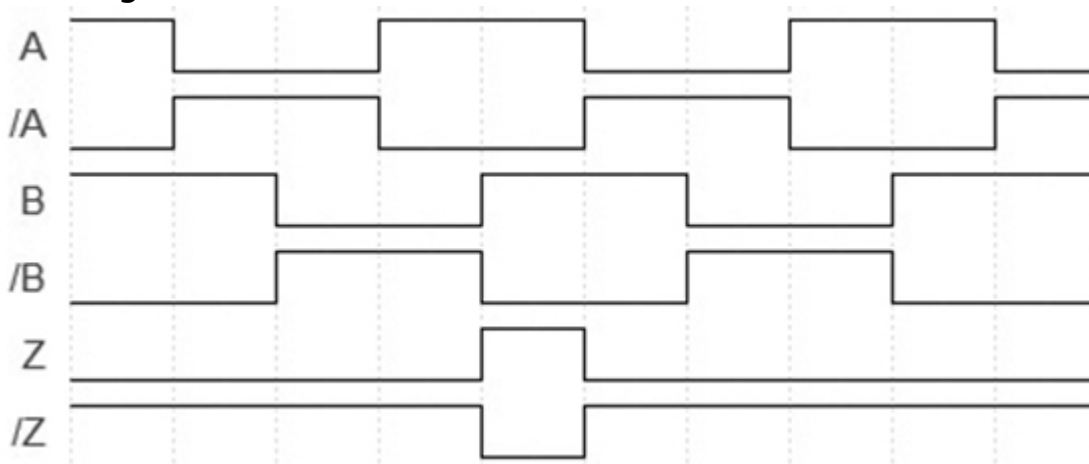
SIGNAL	CABLE COLOR
A	Yellow
/A	Brown
B	Green
/B	Blue
Z	



/Z	Orange
Power Supply	Red
GND	Black
Shielding	Shield

Connector-View on Encoder

### Pulse Diagram



Rotation Clockwise (seen on shaft)

### Dimensional Drawing

#### Accessories

Displays

AP20-00 Counter

AP20-D0 Counter (4 dig. o/p)

AP20-0A Counter (analog o/p)

AP20-DA Counter (4 dig. + analog o/p)

DiMod Counter (Relay o/p)

More

Torque Support

Tether 1025 (OCD-IN)

Stator Coupling 1108 (OCD-IN)

**Got questions? Need an individual solution? We are here to help!**



## Contact Us

If the drawings are not available please refer to the "Download" section. The picture and drawing are for general presentation purposes only. All dimension in [inch] mm. © FRABA B.V., All rights reserved. We do not assume responsibility for technical inaccuracies or omissions. Specifications are subject to change without notice.