



POSITION SWITCH, METAL-ENCLOSED, SPRING-ACTUATED LOCK, DC 24V, M20 X 1.5

Figure similar

product designation	position switch with tumbler
design of the product	with separate actuator
suitability for use safety switch	Yes
<b>General technical data</b>	
locking force	2 000 N
protection class IP	IP67
reference code according to IEC 81346-2	S
Substance Prohibitance (Date)	07/01/2006
length of the sensor	141.5 mm
width of the sensor	45 mm
<b>Ambient conditions</b>	
ambient temperature	
• during operation	-30 ... +70 °C
number of NC contacts for auxiliary contacts	3
<b>Enclosure</b>	
design of the housing	special design
material of the enclosure	metal
coating of the enclosure	painted
design of the housing according to standard	No
<b>Drive Head</b>	
design of the actuating element	separate actuator
design of the switching function	positive opening
number of directions of actuation	4
circuit principle	slow-action contacts
number of switching contacts safety-related	3
number of NO contacts for auxiliary contacts	1
locking mechanism design	spring-actuated lock
<b>Installation/ mounting/ dimensions</b>	
fastening method	screw fixing
<b>Connections/ Terminals</b>	
type of electrical connection	screw-type terminals
<b>Certificates/ approvals</b>	
General Product Approval	Test Certificates



[Confirmation](#)



[Miscellaneous](#)

Marine / Shipping

other



[Confirmation](#)

### Further information

Information- and Downloadcenter (Catalogs, Brochures,...)

<https://www.siemens.com/ic10>

Industry Mall (Online ordering system)

<https://mall.industry.siemens.com/mall/en/en/Catalog/product?mlfb=3SE2840-0XX00>

Cax online generator

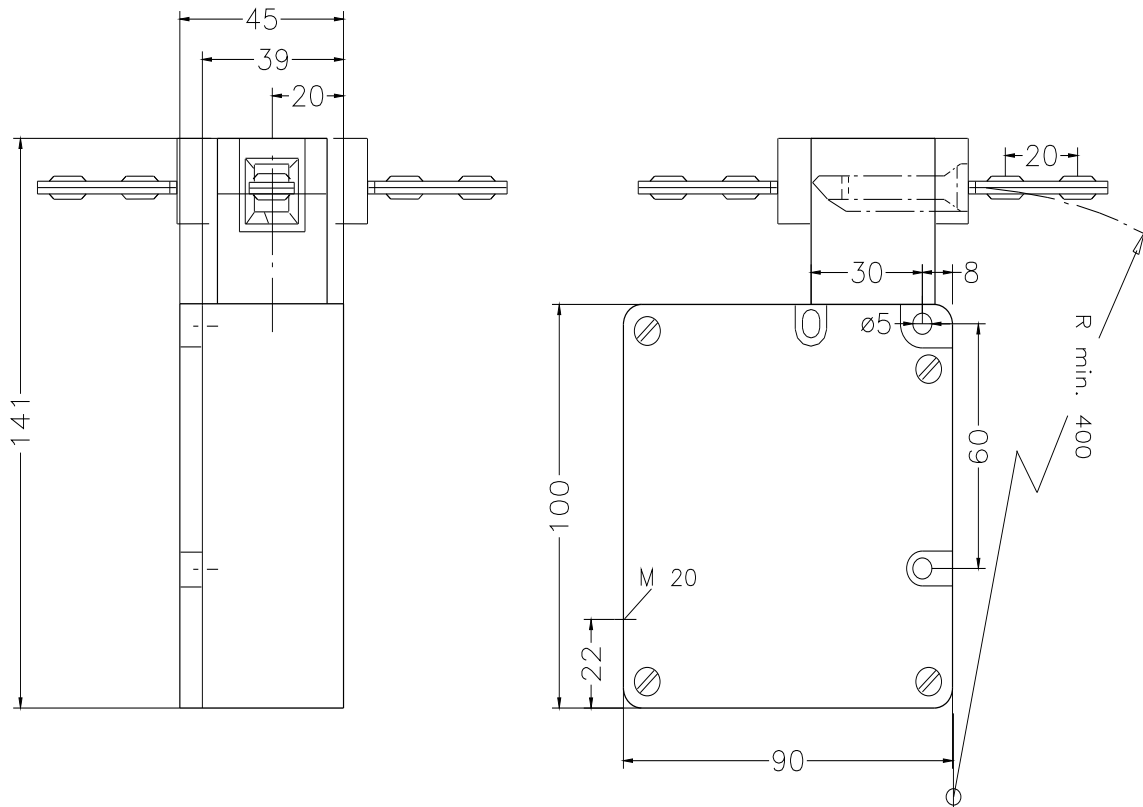
<http://support.automation.siemens.com/WW/CAXorder/default.aspx?lang=en&mlfb=3SE2840-0XX00>

Service&Support (Manuals, Certificates, Characteristics, FAQs,...)

<https://support.industry.siemens.com/cs/ww/en/ps/3SE2840-0XX00>

Image database (product images, 2D dimension drawings, 3D models, device circuit diagrams, EPLAN macros, ...)

[http://www.automation.siemens.com/bilddb/cax\\_de.aspx?mlfb=3SE2840-0XX00&lang=en](http://www.automation.siemens.com/bilddb/cax_de.aspx?mlfb=3SE2840-0XX00&lang=en)



last modified:

1/18/2021